

COMODO
Creating Trust Online®



Comodo Endpoint Security Manager Professional Edition

Software Version 3.0

Quick Start Guide

Guide Version 3.0.052013

Comodo Security Solutions
1255 Broad Street
STE 100
Clifton, NJ 07013

Comodo Endpoint Security Manager - PE

Quick Start Guide

This tutorial briefly explains how an administrator can setup Comodo Endpoint Security Manager Professional Edition (CESM PE) then install and monitor installations of Comodo Endpoint Security (CES) on networked computers.

We recommend admins to have read the '[Best Practices](#)' section before putting this tutorial into practice.

The guide will take you through the following processes - click on any link to go straight to that section as per your current requirements.

[Step 1 - Install](#)

[Step 2 - Login to the Admin Console](#)

[Step 3 - Import Endpoints and Install Agents \(and optionally Comodo Endpoint Security\)](#)

[Step 4 - Open the dashboard - check that target endpoints are reporting correctly](#)

[Step 5 - Create Groups of computers](#)

[Step 6 - Import security policy from an endpoint and apply to groups](#)

[Step 7 - View Reports](#)

Step 1 - Install Comodo Endpoint Security Manager Professional Edition (see [Installing and Configuring the Service](#) if you need more help with this)

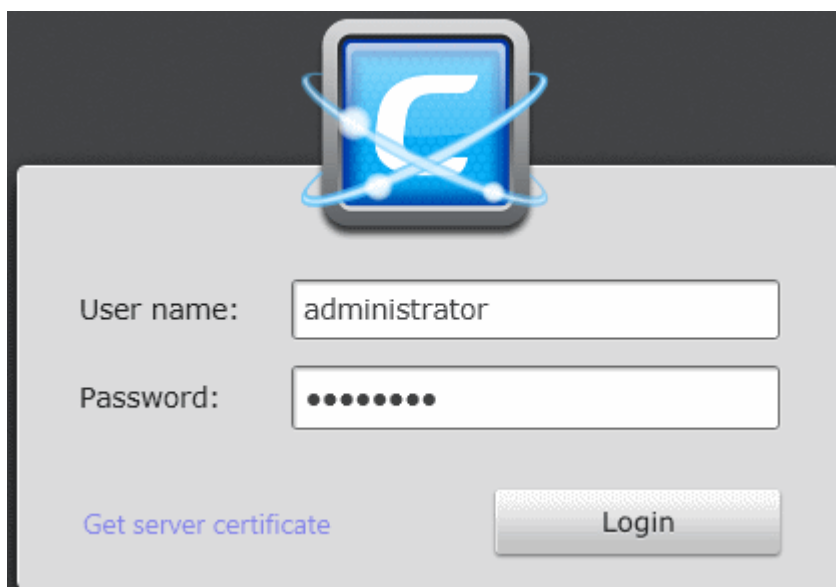
1. Download and run the CESM PE setup file. A link to this file is provided in your license confirmation email. This file will install the central service on the machine you intend to use as the CESM server. Supported operating systems are Win XP SP3, Win Vista SP2, Win 7, Win 8, Windows Server 2003, Windows Server 2003 Small Business Server, Windows Server 2008, Windows Server 2008 R2, Windows Server 2008 Small Business Server and Windows Server 2012. There is a choice of two setup files. The '..._FULL.exe' file contains all additional required software (.net Framework 4, (for Windows XP and Windows Server 2003) or net. Framework 4.5 (for any other OS), SQL Server compact 2012 Express LocalDB and Microsoft Report Viewer 10.0). The other is a lightweight web installer that does not contain this additional software but will download it from the Internet if it is not detected on your server.
2. Run the setup file. Any missing software components will be automatically installed (CESM requires .NET, SQL server compact and Microsoft report viewer).
3. Choose the installation type:
 - Select 'Typical' as the installation type for fastest setup experience. After installation you will need to provide a valid license key in the 'License Information' screen of the console interface to start using the service. The License Information screen can be accessed by selecting 'About' from the drop-down at the top left and clicking 'License Information' from the left hand side navigation.
 - Select 'Custom' if you wish to change install location or select which components are installed. You will be able to enter a valid license key during setup.
 - Select 'Complete' if you want to install full set of CESM components.
4. At the setup finalization dialog, make sure 'Launch CESM Configuration Tool' is selected before clicking 'Finish'.
5. In the configuration tool, take note of the hostname/IP address of the server and the port settings. You will need these if you wish to access the console from [remote](#) machines and if you want to setup protection for laptops and other computers that are outside the local network (you will also need to open these ports to the Internet on your enterprise firewall).
6. This tool also allows you to modify Internet connection settings and specify mail server settings (required for email notifications).
7. Since the ESM console can be accessed via the Internet, you may desire to obtain an SSL certificate and apply it using the Configuration Tool or you can distribute the self-signed certificate already installed to computers that you will use to administer ESM.

Step 2 - Login to the Admin Console (see [logging into the console](#) if you need more help with this)

1. After setup is complete, there are two ways that you can access the admin console:
 - On the server itself - open the console by clicking 'Start > All Programs > COMODO > Endpoint Security Manager > CESM Console'
 - From remote machines via Internet browser - use the following address format to access the console:
 - `https://<your server hostname or IP address>:57194`

Tip: You can find the server hostname/IP and the CESM port numbers by opening the **configuration tool** on the server. Click 'Start > All Programs > Comodo > Endpoint Security Manager > CESM Configuration Tool'.

2. Login to the console using the Windows administrator user name and password of the system that CESM was installed on to begin using your software.



3. To log out of the console, close the browser window or tab containing the console, or press the 'Refresh' button or choose 'Logout' from the drop-down at the top left of the interface.

Step 3 – Import Endpoints and Install Agents (and optionally Comodo Endpoint Security)

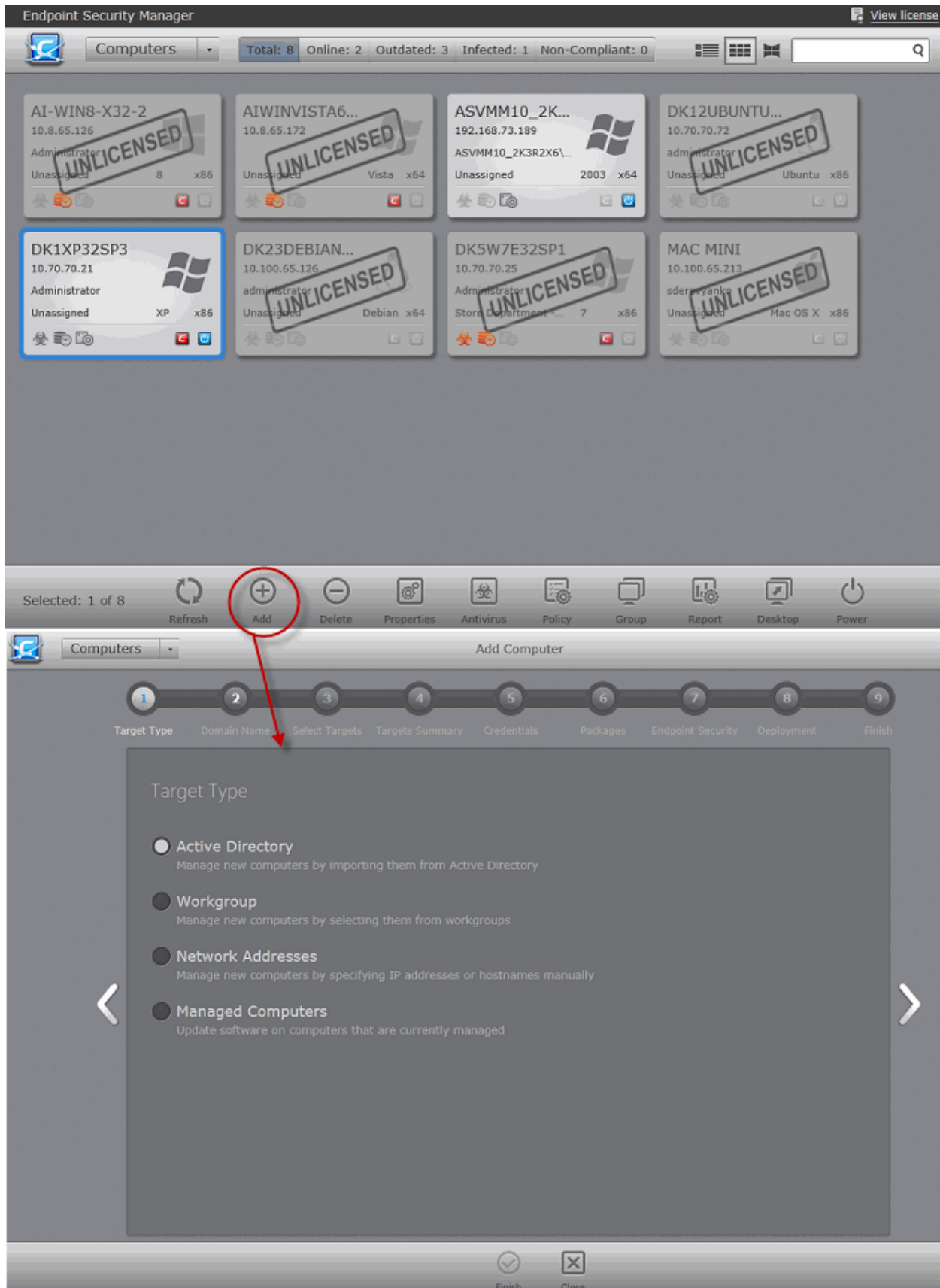
Next, we need to import endpoints and install the agent and **Comodo Endpoint Security** on them. The agent is a small piece of software that facilitates communication between the endpoint and the CESM server.

There are two ways to accomplish this:

- Remotely, using a console wizard to automatically push the agent and (optionally) CES onto target machines. This wizard is started by clicking Add from the Computers interface of the console.
- Locally. You can download the agent setup file from the admin console, transfer the file to the endpoints to be managed through any media like DVD, CD, USB memory and install the agent at the endpoints. Detailed explanation on using this method can be found in **Adding Computers by Manual Installation of Agent and CES**.

The remainder of step 3 describes the first method - remote installation.

1. Open the 'Computers' interface by selecting Computers from the drop-down at the top left.
2. Click 'Add' from the 'Computers' interface. The 'Add Computer' wizard will start.



3. The first stage is to choose how you want to import (Target Type). Computers can be imported using one of three methods: Active Directory, Workgroup or by IP Address. Administrators should, of course, repeat this wizard until they have imported all computers in their network.
4. Select the appropriate import method then swipe the screen to the move to the next stage. 'Swiping' is done by holding left-click button down in gray space and dragging the mouse to the left. If you have a touch-sensitive screen then you

can swipe between screens with your finger. A third alternative is to click the arrows in the middle on the left and right side of the interface. These arrows turn blue in color when the mouse cursor is placed on them.

- If you chose 'Active Directory', you next have to choose whether to import from the current domain or a custom domain. The 'current' domain means whichever domain the CESM server is a member of - not the current domain of the endpoint being used to manage the server. If you choose 'custom domain' then you will need to enter the IP or name of the domain controller and the administrator username and password for that domain.
- If you chose 'Workgroup', you next have to specify which workgroup to import from. You can specify manually by typing the workgroup name or use the 'Find Workgroups' option to have the wizard present you with a choice of workgroups detected on the server machine's local network. You can only import from one workgroup at a time so you may have to repeat this wizard.
- If you chose 'IP Addresses', you next have to specify the IP, IP range, host name or subnet of the target machines. Click the 'Add' button to confirm your choice. Repeat until you have added all IP addresses or ranges that you wish to scan.

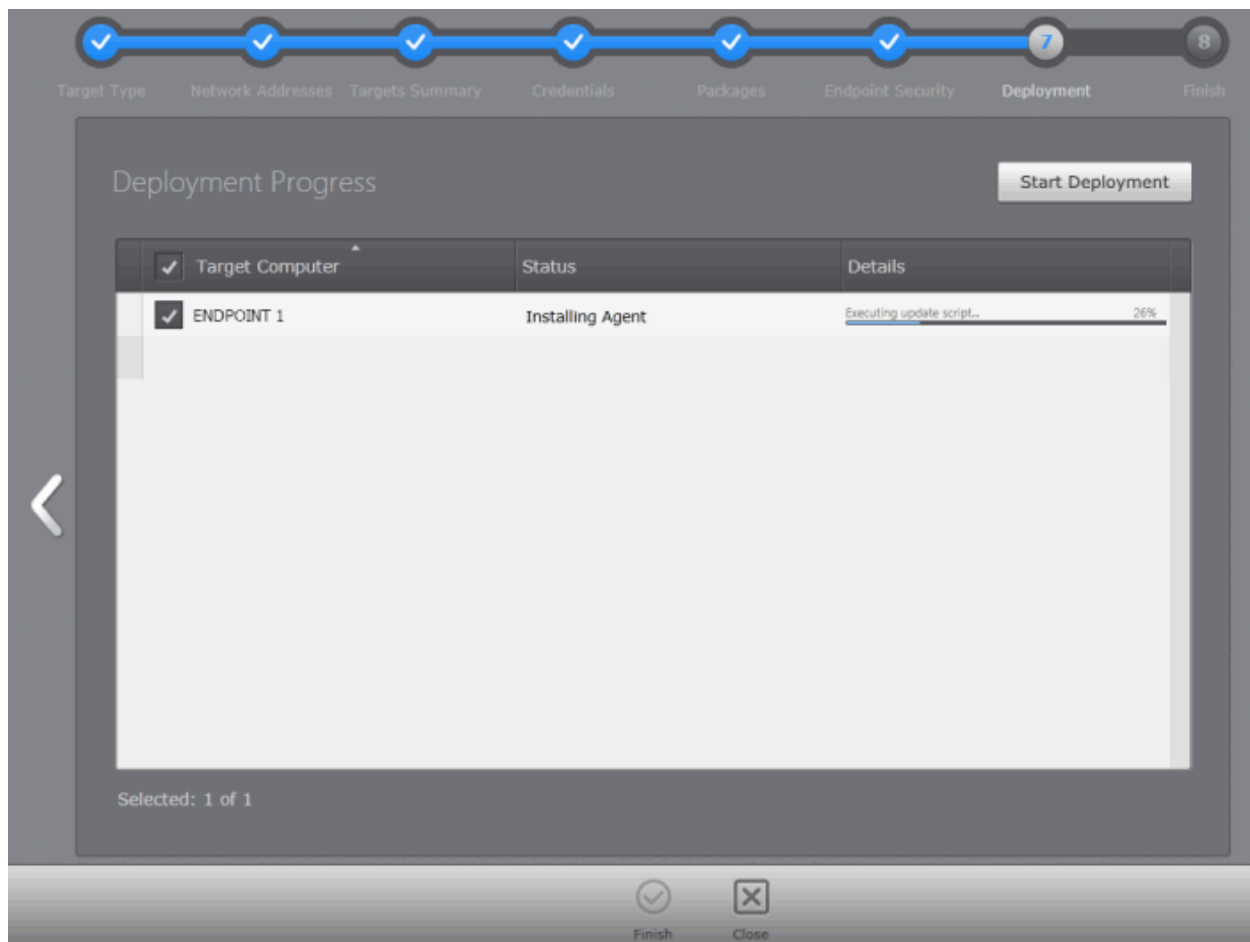
Swipe left to continue (or click the right arrow button).

5. The next stage, 'Select Targets', allows you to choose those imported computers onto which you want to install the Agent and Comodo Endpoint Security. Select the check-boxes next to your intended targets and swipe the screen left to continue (or click the right arrow button).
6. The next step 'Target Summary' provides you the summary such as status, IP address of the endpoint(s) that you want to install the agent or CES. Select the check box beside the computer that you want to install the packages. If you want to select all the computers, select the check box beside the 'Target Computer'. Swipe left (or click the right arrow button) to move onto the next step.
7. Credentials. Next up is to choose whether the agent has to be installed under the currently logged in user account or the network administrator account. If you choose 'Custom Credentials', enter the user name and password of an account with administrative privileges on the machine - such as Administrator, hostname\administrator, domain\administrator as the login ID. Swipe left (or click the right arrow button) to move onto the next step.
8. The next stage 'Packages' displays the version details of ESM Agent and CES. You can also check for updates of these applications and download it in your server for deployment on to the end-points. Swipe left (or click the right arrow button) to move onto the next step.
9. The final step prior to deployment is to decide whether you want to install Comodo Endpoint Security (CES) *also* at this time.
 - If you want to continue with this process and install CES now then make sure 'Install Comodo Endpoint Security' is enabled and:
 - (1) Choose the CES version you wish to install from the drop down (most recent is recommended in virtually all cases).
 - (2) Choose components to install - Antivirus or All Components.
 - (3) Check 'Suppress Reboot' if you do not want the target endpoint to automatically restart after installation. Reboot is required to complete installation, but you may want to postpone this until later.
 - (4) 'Uninstall all incompatible products' - Check this option to uninstall select third party antivirus, firewall and other desktop security software from the endpoints, prior to the installation of CES. Performing this step will remove potentially incompatible products and thus enable CES to operate correctly. Some incompatible products can be detected, but not automatically uninstalled and must be removed manually. If your product is detected but not uninstalled, please consult your vendor's documentation for precise uninstallation guidelines.

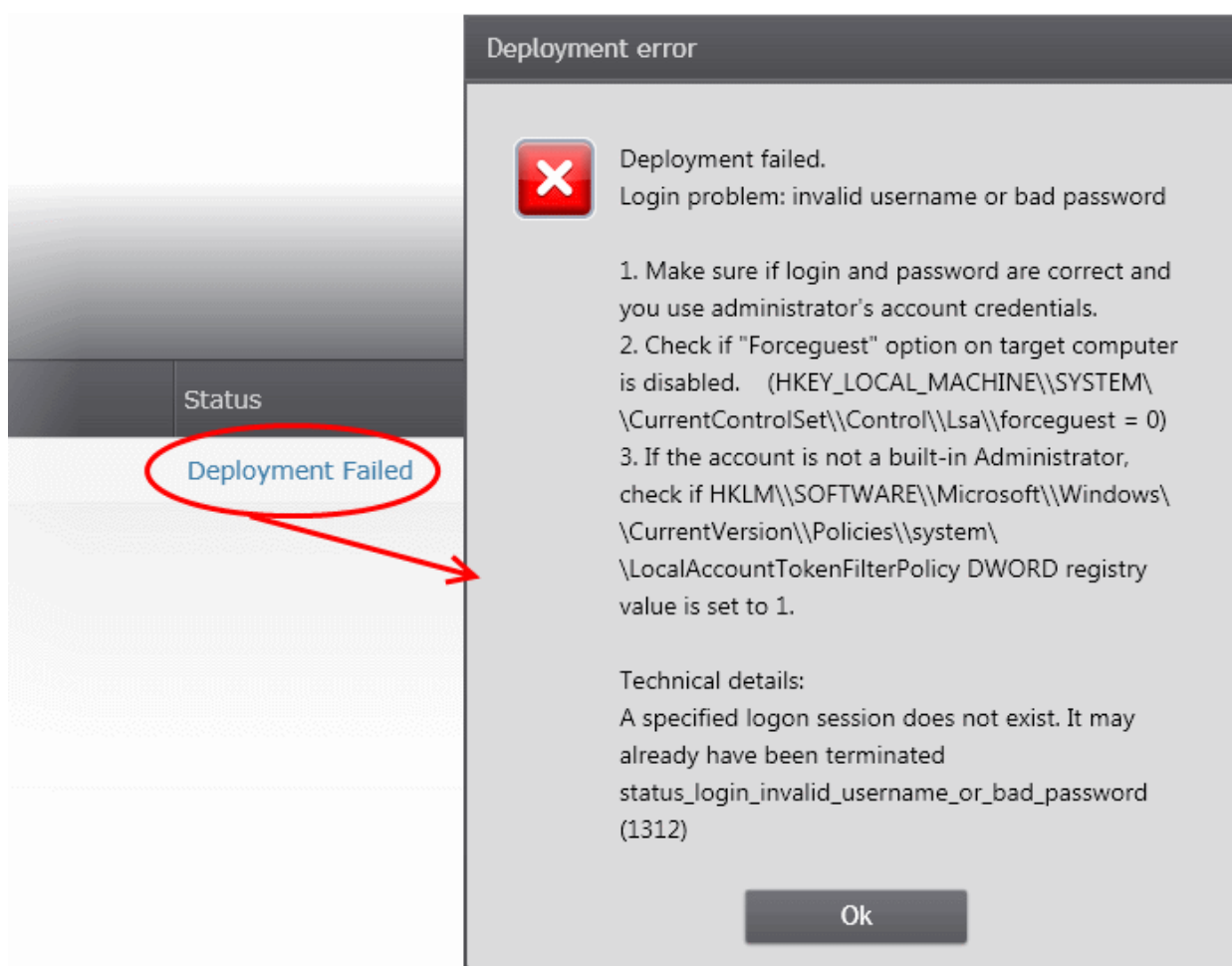
Click here to see the full list of incompatible products.

Swipe left (or click the right arrow button) to move onto the next step to move to deployment step.

10. Deployment.
 - Click 'Start Deployment'. You will see installation progress per-endpoint. Once installation is complete, you should see a results screen similar to the following screenshot.



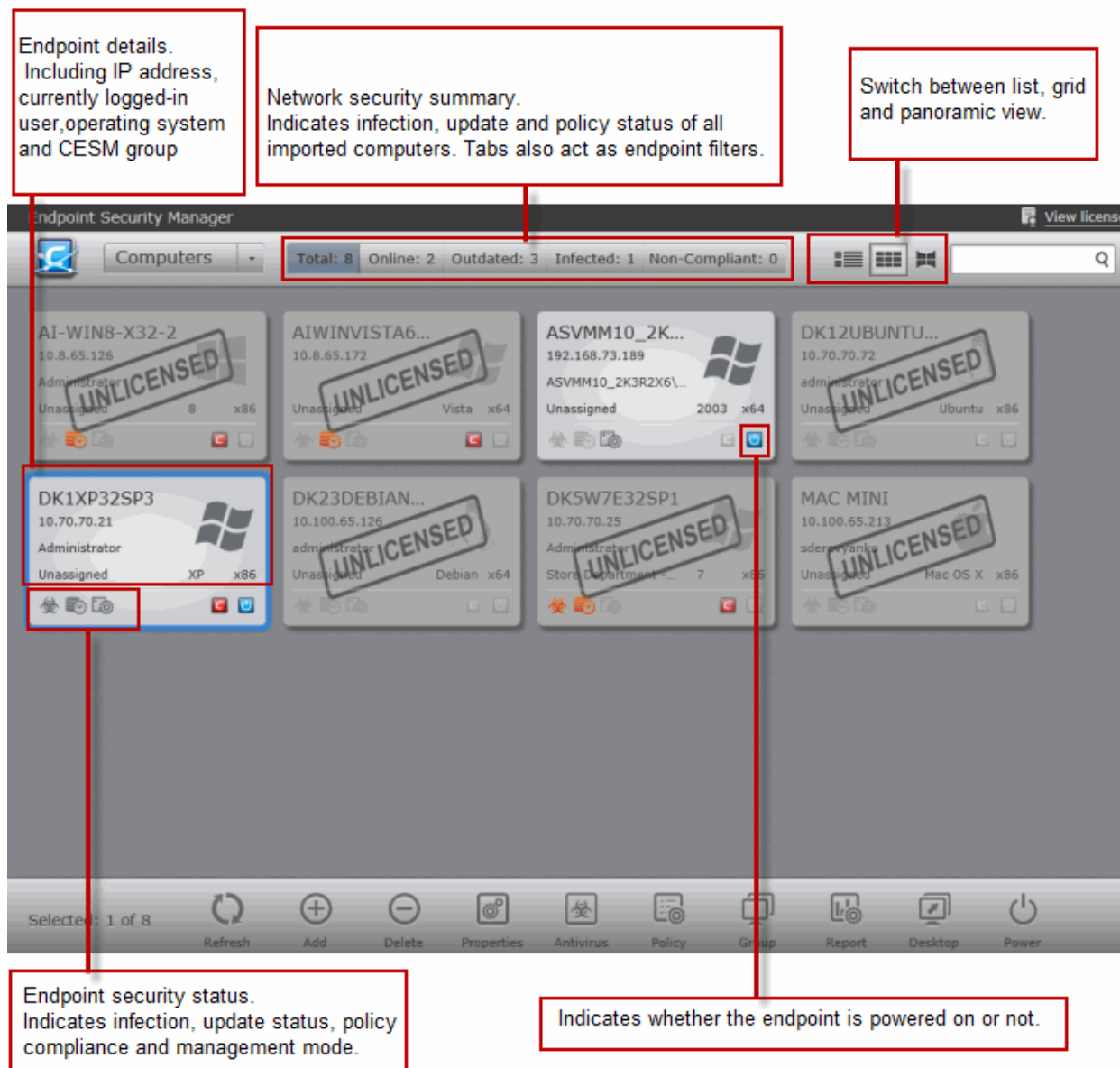
- If deployment fails, click on the words 'Deployment Failed' to discover the reason. The info box also contains advice that may remediate the issue.



- Once deployment is successful, click the 'Finish' icon at the base of the interface to exit the wizard. If you have chosen to install both the agent & CES then those endpoints should now be reporting to CESM.

Step 4 - Check that target endpoints are reporting correctly

1. Open the 'Computers' interface by selecting Computers from the drop-down at the top left.



2. The details on all the computers added will be displayed in the 'Computers' interface. Check whether all the computers are added from the 'Total' and 'Online' fields in the title bar. The title bar also provides a snapshot information regarding connectivity, virus outbreaks and security policy compliance.
 - After checking that all computers are reporting correctly, make sure the latest virus databases are installed. Select all the computers and click the 'Update AV' at the base of the interface.
 - After updating, we advise running a [virus scan](#) on all computers. Select all the computers and click **Antivirus -> Scan -> Full Scan** at the base of the interface to do this. **Note** - real-time AV protection is already running on all endpoints. If any malware is discovered, it will be brought to your attention by change in color of status indicators.
 - General advice regarding navigation and other functional areas can be found in **The Administrative Console**.

Step 5 - Create Groups of computers

In CESH, security policies are applied to 'groups' of computers rather than individual endpoints. Once a group has been created, admins can run tasks on entire groups of computers (such as applying policy, running AV scans, deploying agents, updating AV databases and more). 'Policies' are the security configuration of CES and are imported from specific, already configured, endpoints then applied to groups (we will cover this in step 6).

- By default, all newly imported computers are placed into a group named 'Unassigned' and inherit that group's security policy of 'Locally Configured'. Effectively, this means remote management is not in operation and the endpoints will continue to use the security policy that is already in effect on the endpoint. If needed, the administrator can assign a

policy to 'Unassigned' group so that the policy will be applied to any imported computer and remote management is enabled immediately.

- We advise admins to create groups corresponding to the structure of their organization THEN import policy (from an endpoint) and apply it to selected groups. Policies can also later be changed for individual computers in a group, overriding group policy defaults.
- To start,
 - Open 'Groups' area by selecting 'Groups' from the drop-down at the top left,
 - Click 'Add' from the bottom to start the 'Create Group' Wizard,
 - Select required computers,
 - Leave policy as (Locally Configured),
 - Type a name for the group then finish.
- If you wish to create multiple groups, repeat the previous step until all computers have been assigned.
- See '**Creating New Endpoint Groups**' if you need help with this wizard. See '**The Groups area**' for an overview of functionality.

Step 6 - Import security policy from an endpoint and apply to groups

A policy is the security configuration of Comodo Endpoint (CES) deployed on a group of endpoints. Each policy determines the antivirus settings, internet access rights and Defense+ application control settings for an endpoint. Policies are imported from already tested and configured endpoint machines then applied to groups. In the previous step, you assigned computers into groups but left the policy as 'Locally Configured' - which means remote management is effectively switched off (CESM will not enforce policy compliance and each endpoint in the group will simply continue to use the CES settings it is currently using).

The next tasks are to import a policy from a tested and configured endpoint and apply the policy to a group.

- Once you have set and tested the policy at the endpoint, you should return to the CESM console and prepare to import this policy. Note - leave the endpoint in locally managed mode while doing this.
- At the console,
 - Open the 'Policies' interface by selecting 'Policies' from the drop-down at the top left.
 - Click 'Add' from the 'Policies' interface to start the 'Create Policy' wizard.
 - Select 'Create New' and choose the specific computer from which you want to import. Modify 'Settings' and 'Agent Settings' if required.
- For 'Targets', choose which groups you want to apply the policy to and how you want it applied. 'For local policy' and 'For Internet policy' are the policies to be used depending on whether the machine connects from inside or outside of the VPN. Also, select 'Override individual computer's policy' to make sure this policy is applied correctly.
- Selecting 'Force target computers to be managed remotely upon policy assignment' means CESM will engage 'Remote Mode' and thus enforce policy compliance on the selected endpoint. If the policy becomes altered, CESM will automatically re-apply it. If not selected, the endpoints will remain in locally managed mode (although your policy will still be applied, it could become changed over time at the local level).
- Finally, give the policy a name and description and select 'Apply policy after finish' to immediately implement. Do not select this if you wish to deploy later.

Please see **Policies - Key Concepts** for more explanation of policies - including how to create, import, export and deploy.

Step 7 – Viewing Reports

The reports area contains a wealth of valuable information for administrators. Admins can also drill-down to individual endpoints from any report. Reports can be exported, printed and cover the following categories:

- Antivirus Updates
- CES Configuration
- CES Logs
 - Antivirus Logs
 - Firewall Logs
 - Defense+ Logs

- Computer Details
- Computer Infections
- Malware Statistics
- Policy Compliance
- Policy Delta
- Quarantined Items
- Top 10 Malware

Click here to read more about reports.

About Comodo

The Comodo companies are leading global providers of Security, Identity and Trust Assurance services on the Internet. Comodo CA offers a comprehensive array of PKI Digital Certificates and Management Services, Identity and Content Authentication (Two-Factor - Multi-Factor) software, and Network Vulnerability Scanning and PCI compliance solutions. In addition, with over 10,000,000 installations of its threat prevention products, Comodo Security Solutions maintains an extensive suite of endpoint security software and services for businesses and consumers.

Continual innovation, a core competence in PKI and a commitment to reversing the growth of Internet-crime distinguish the Comodo companies as vital players in the Internet's ongoing development. Comodo, with offices in the US, UK, China, India, Romania and the Ukraine, secures and authenticates the online transactions and communications for over 200,000 business customers and millions of consumers, providing the intelligent security, authentication and assurance services necessary for trust in on-line transactions.

Comodo Security Solutions, Inc.

1255 Broad Street

STE 100

Clifton, NJ 07013

United States

Tel : +1.877.712.1309

Email: EnterpriseSolutions@Comodo.com

For additional information on Comodo - visit <http://www.comodo.com>.